



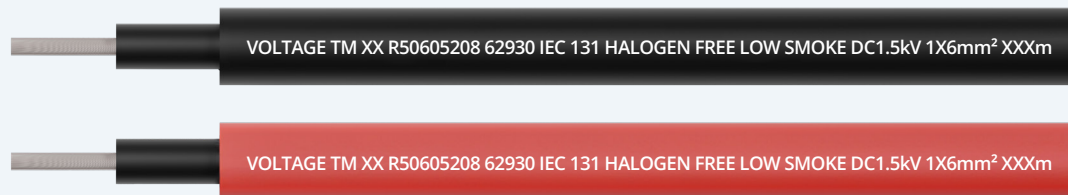
EUROPE PV Wire



VOLTAGEENERGY.COM

// PV CABLE (CU)

62930 IEC 131 Halogen Free Low Smoke

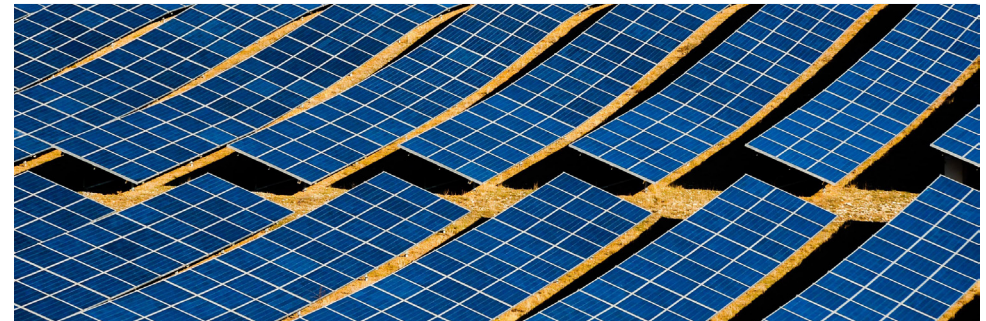


SAMPLE PRINT

VOLTAGE TM XX R50605208 62930 IEC 131 HALOGEN FREE LOW SMOKE DC1.5kV 1X6mm² XXXm

APPLICATIONS

- For use in photovoltaic power systems
- UV and ozone resistant
- Operating temperature: Rated 90°C for exposed and 120°C limited to 20,000h
- Min. installation temperature: -25°C
- Max. storage temperature: +45°C
- Rating voltage: DC1.5kV, AC1.0/1.0kV
- Over 25 years usable life
- Max. short-circuit temperature 250°C for 5s
- Min. bending radius during installation: 5D (D=diameter of cable)



OPTIONS

- Class 2 conductor for fixed installation
- Cables with halogen
- Other sizes of conductors
- Multi-core cables used for PV system
- Other color sheath

CONSTRUCTION

- Conductor: 2.5 mm² through 400 mm² Class 5 soft tinned annealed copper wire according to IEC 60228
- Insulation: Extruded XLPE compound, flame retardant, halogen free, cross-linked
- Outer Sheath: Extruded XLPE compound, flame retardant, halogen free, cross-linked, black or red colored

STANDARDS

- IEC 62930 Electric cables for photovoltaic systems with voltage rating of 1.5kV DC
- EN 50618 Electric cables for photovoltaic systems
- IEC 60228 Conductors of insulated cables
- IEC 60332-1-2 Test for vertical flame propagation for a single insulated wire or cable
- Reach RoHS Compliant

// PV CABLE (CU)

62930 IEC 131 Halogen Free Low Smoke

STRUCTURE PARAMETERS

Size	Conductor Diameter	Insulation Thickness	Jacket Thickness	Cable Diameter	Min. Bending Radius	Max. Pulling Tension	Total Cable Weight
mm ²	mm	mm	mm	mm	mm	kN	kg/km
2,5	2.0	0.7	0.8	5.0	25	0.18	45
4	2.5	0.7	0.8	5.5	28	0.28	58
6	3.0	0.7	0.8	6.0	30	0.42	77
10	4.1	0.7	0.8	7.1	36	0.70	123
16	5.2	0.7	0.9	8.4	42	1.12	189
25	6.5	0.9	1.0	10.3	52	1.75	282
35	8.8	0.9	1.1	12.8	64	2.45	375
50	10.2	1.0	1.2	14.6	73	3.50	466

PERFORMANCE INDEX

Resistance			Single cable free in air @30°C	Single cable on the surface @30°C	Two cables touching on the surface @30°C
DC @20°C	DC @90°C	Insulation @20°C			
Ω/km	Ω/km	MΩ/km	A	A	A
8.210	10.470	862	42	40	33
5.090	6.490	709	57	54	45
3.390	4.320	610	72	69	58
1.950	2.490	489	98	96	80
1.240	1.580	393	132	130	107
0.795	1.014	395	183	174	138
0.565	0.720	335	227	215	171
0.393	0.501	314	287	273	209

// PV CABLE (AL)

PV1500DC-AL Halogen Free Low Smoke

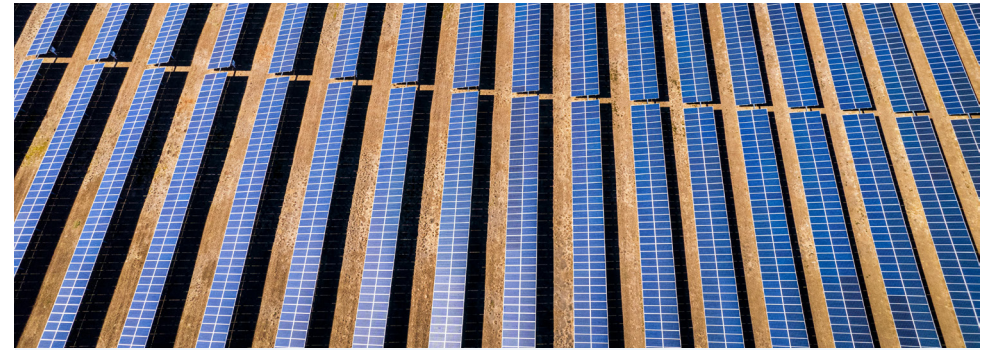


SAMPLE PRINT

VOLTAGE TM XX R50607776 PV1500DC-AL HALOGEN FREE LOW SMOKE DC1.5kV 1X35mm² XXXm

APPLICATIONS

- For use in photovoltaic power system, fixed installation
- UV and ozone resistant
- Operating temperature: Rated 90°C for exposed and 120°C limited to 20,000h
- Min. installation temperature: -25°C
- Max. storage temperature: 45°C
- Rating voltage: DC1.5kV, AC1.0/1.0kV
- Over 25 years usable life
- Max. short-circuit temperature 250°C for 5s
- Min. bending radius during installation: 8D (D=diameter of cable)



OPTIONS

- Class 5 stranding conductors used for flexible conditions
- Cables used for direct burial (DB)
- Other sizes of conductors
- Other color sheath

CONSTRUCTION

- Conductor: 10 mm² through 400 mm² Class 2 Aluminum Alloy according to IEC 60228
- Insulation: Extruded XLPE compound, flame retardant, halogen free, cross-linked
- Outer Sheath: Extruded XLPE compound, flame retardant, halogen free, cross-linked, black or red colored

STANDARDS

- 2 PFG 2642 Requirement for aluminum cables for fixed installation in ground for photovoltaic systems
- IEC 60228 Conductors of insulated cables
- IEC 60332-1-2 Test for vertical flame propagation for a single insulated wire or cable
- Reach RoHS Compliant

// PV CABLE (AL)

PV1500DC-AL Halogen Free Low Smoke

STRUCTURE PARAMETERS

Size	Conductor Diameter	Insulation Thickness	Jacket Thickness	Cable Diameter	Min. Bending Radius	Max. Pulling Tension	Total Cable Weight
mm ²	mm	mm	mm	mm	mm	kN	kg/km
10	4.0	0.8	0.8	7.2	58	0.4	64
16	5.1	0.9	0.9	8.7	70	0.6	95
25	6.0	1.0	1.0	10.0	80	1.0	135
35	7.0	1.1	1.1	11.4	91	1.4	178
50	8.3	1.2	1.2	13.1	105	2.0	234
70	9.7	1.2	1.2	14.5	116	2.8	304
95	11.4	1.3	1.3	16.6	133	3.8	404
120	12.8	1.3	1.3	18.0	144	4.8	485
150	14.2	1.4	1.4	19.8	158	6.0	590
185	15.9	1.6	1.6	22.3	178	7.4	748
240	19.0	1.7	1.7	25.8	206	9.6	951
300	20.5	1.8	1.8	27.7	222	12	1164
400	23.2	2.0	2.0	31.2	250	16	1484

PERFORMANCE INDEX

Resistance			Directly buried (soil depth 1m) @20°C	Single cable free in air @30°C	Single cable on the surface @30°C
DC @20°C	DC @90°C	Insulation @20°C			
Ω/km	Ω/km	MΩ/km	A	A	A
3.08	3.95	489	115	76	74
1.91	2.45	395	150	102	101
1.20	1.54	393	192	142	135
0.868	1.11	335	230	176	167
0.641	0.82	314	271	223	212
0.443	0.57	291	333	281	268
0.32	0.41	258	398	336	319
0.253	0.32	249	454	395	376
0.206	0.26	268	501	458	434
0.164	0.21	260	569	522	496
0.125	0.16	249	660	628	596
0.10	0.13	237	745	708	671
0.0778	0.1	230	853	853	809



VOLTAGE CLEAN ENERGY GMBH

Hamburger Allee 2-4
60486 Frankfurt am Main, Germany

+49 69 - 956 389 83

sales.europe@voltageenergy.com



VOLTAGEENERGY.COM

The Voltage name and associated logos, in addition to other trademarks used herein, are owned exclusively by Voltage Group. All rights reserved.

V2.3 - 06/2026